

ASPEN A-75 II

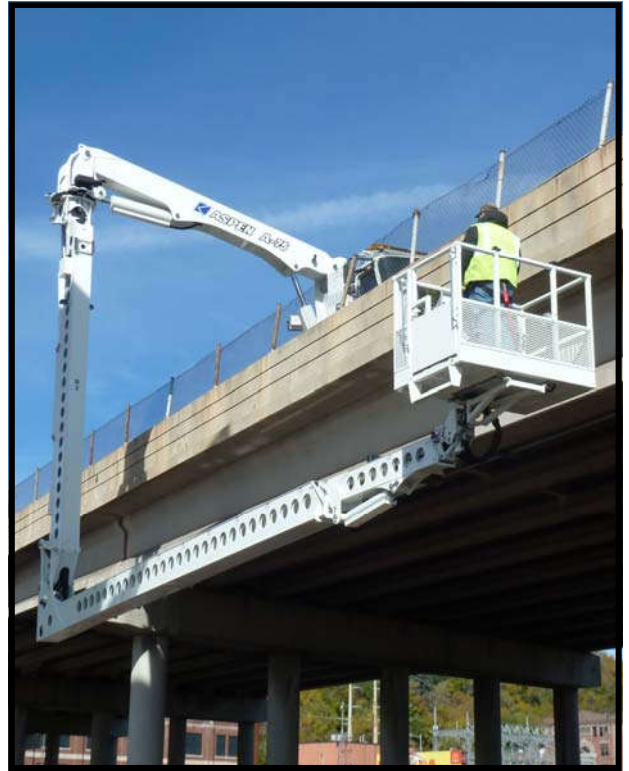
Bridge Inspection Unit

Extended Reach - Access Your Widest Bridges

Underdeck Access.....The flexibility of the Aspen A-75 enables operators to get to virtually any location on wider bridges. The articulated boom design permits access around bridge members and light supports, over fences, across wide sidewalks, between cables/trusses and behind deep girders.

Platform Designed For In-depth Inspections.....A 700 lb. capacity, 40" x 60" **rotating** platform is provided. This, coupled with two rotating turntables plus multiple articulating and telescoping booms allow workers to get to all areas for a close up inspection. The unit can deploy off of either side of the truck, to safely work in the direction of traffic. The Aspen A-75 is truly in a league of its own.

Stabilization.....Outriggers are not required and all counterweights stay within the width of the truck body. The redesigned sliding counterweight is installed under the truck bed and operates to either side while the Aspen A-75 is deployed to the opposite side. In the transport mode, the counterweight stays in the center of the truck for improved road handling. A torsion-box subframe and hydraulic axle locks unitize the chassis and truck axles, allowing the vehicle to travel while the unit is fully deployed.



High Fence Clearance

700 lb. Platform

Control Monitoring

Adjustable Turntable



Turntable no. 2 comes equipped with an automatic leveling system, providing smooth platform movement. In addition, the operator can make manual adjustments of +/- 5 degrees to compensate for the slope of the bridge. With the elimination of the leveling arms, the Aspen A-75 has more vertical clearance to get over high fences.

Telescoping & Rotating



- 180 degree rotating platform
- Telescoping 4th boom
- 16' vertical reach

Advanced Control System

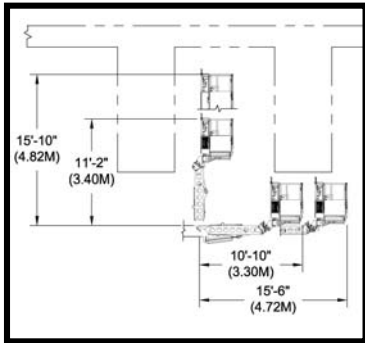


As the most advanced microprocessor control system available, the "Plus 1" Graphical Terminal Interface includes a color display depicting unit operation and individual function performance while monitoring the unit's parameters, hydraulics and enabling simple troubleshooting. Wired/Wireless type controls are included at both operator stations.

Platform Features

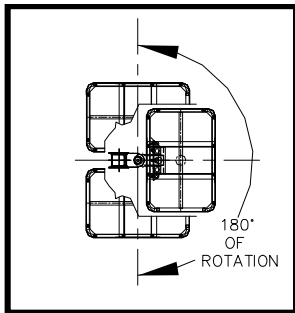
Telescoping 4th boom

The Aspen A-75 has the capability of providing inspectors with over 16' (4m) of vertical reach. This fully hydraulic feature will enable you to get up and behind your deepest girders for a close-up inspection.



Rotating Platform

The added flexibility of a 180 degree rotating platform makes maneuvering into working positions easy, increasing productivity and efficiency.



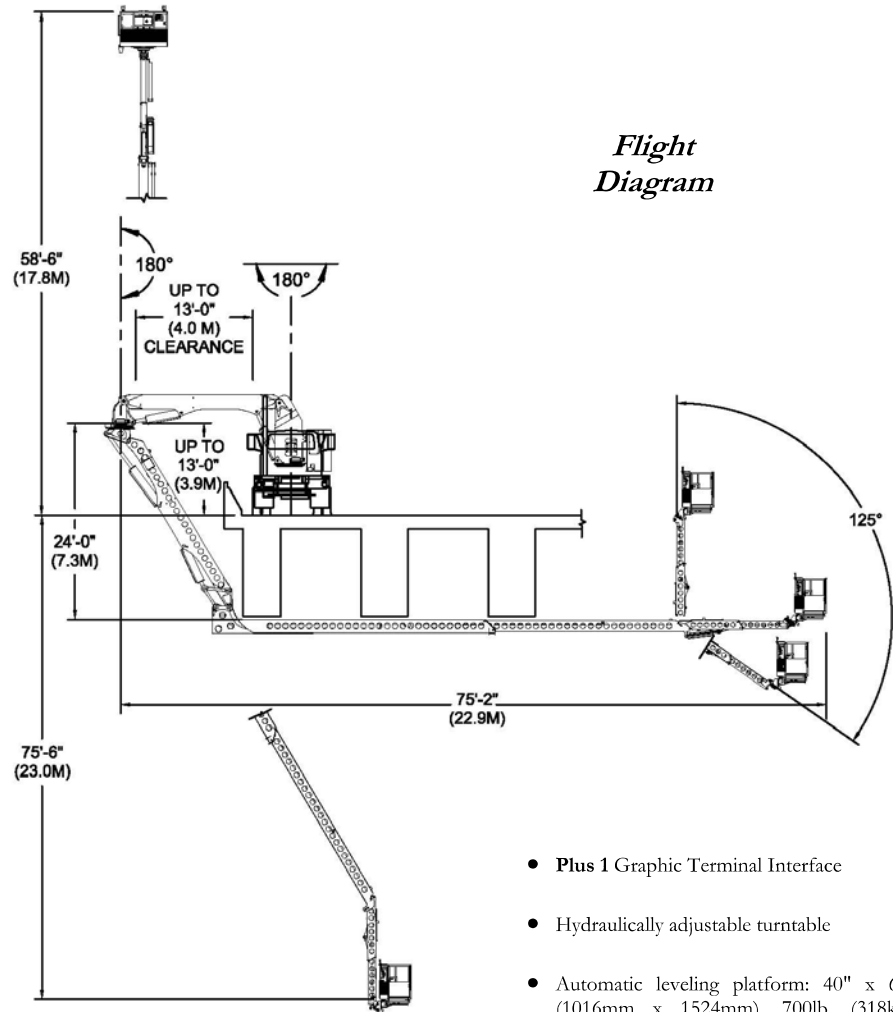
Aspen Aerials, Inc.
4303 West 1st Street
Duluth, MN 55807

Phone: 218-624-1111
Toll Free: 800-888-2773
Fax: 218-624-1714
Web site: www.aspenaerials.com



Specifications

Flight Diagram



Horizontal Underbridge Reach	75' / 22.86m
Vertical Reach Down	72'-3" / 22.02m
Vertical Reach Up	53' / 16.15m
Boom no. 1 movement	+30 to - 35 degrees
Boom no. 2 movement	+ 0 to -120 degrees
Boom no. 3 movement	+90 to - 60 degrees
Boom no. 4 movement	+90 to - 35 degrees
Space Required on Bridge	102" / 2.5m
Basket Capacity	700 lbs. / 318 kg.
Basket Size	40" x 60" x 42" 1010mm x 1520mm
Overall Length	43'-6" / 13.26m *
Overall Height	13'-5" / 4.09m *

* May vary depending on chassis

Available Options:

- Air Compressor and air line in platform
- Generator with electrical outlet in platform
- Platform Heaters & Floodlights
- Remote Controls

- Plus 1 Graphic Terminal Interface
- Hydraulically adjustable turntable
- Automatic leveling platform: 40" x 60" (1016mm x 1524mm), 700lb. (318kg.) capacity w/access gate
- 2 sets of controls: one set in the platform and one set at the pedestal
- 4 articulating booms (3rd & 4th booms telescope); 2 rotating turrets, rotating platform
- Stability interlocks with monitoring system
- Two power systems: power take-off from the truck's transmission and a back-up diesel power unit
- 12-volt intercom system between platform, driver's compartment and pedestal

